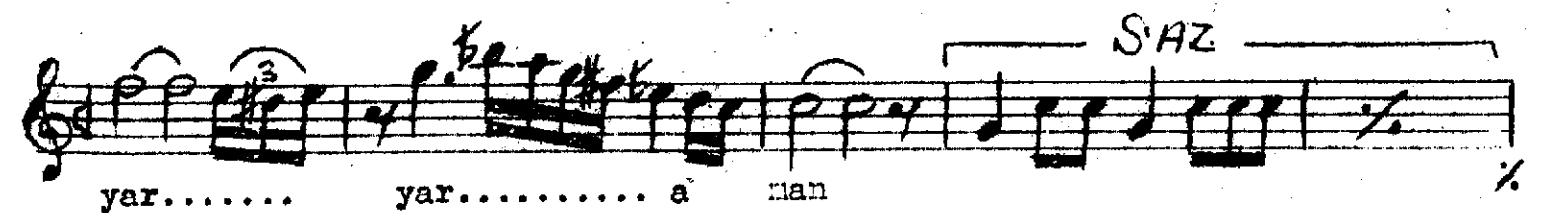
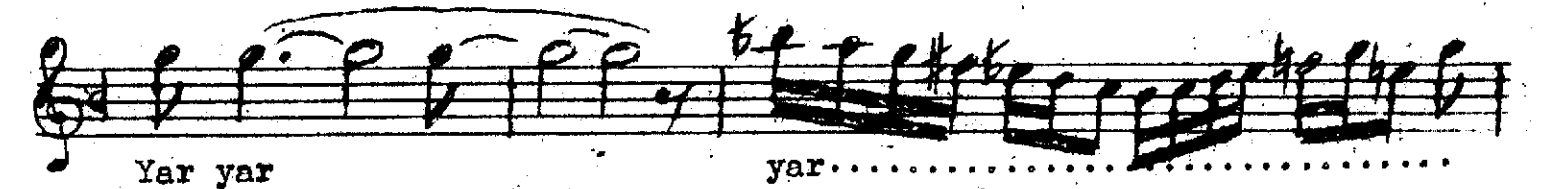
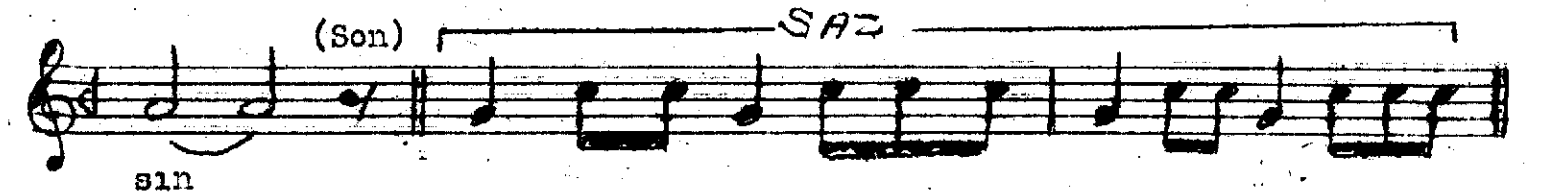
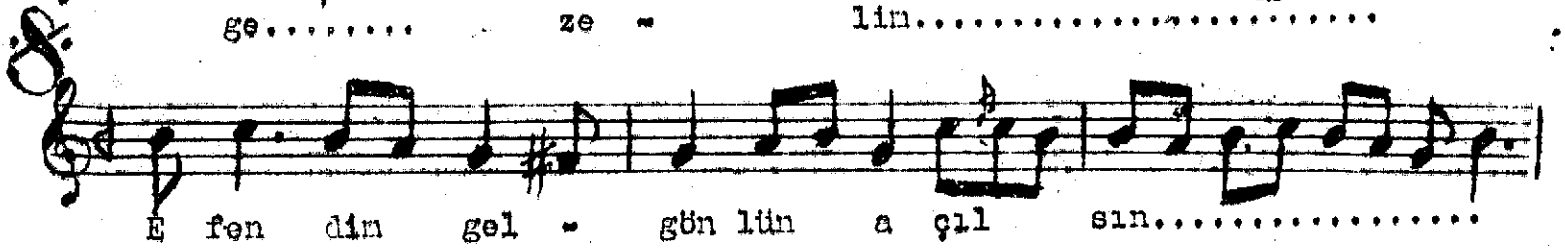
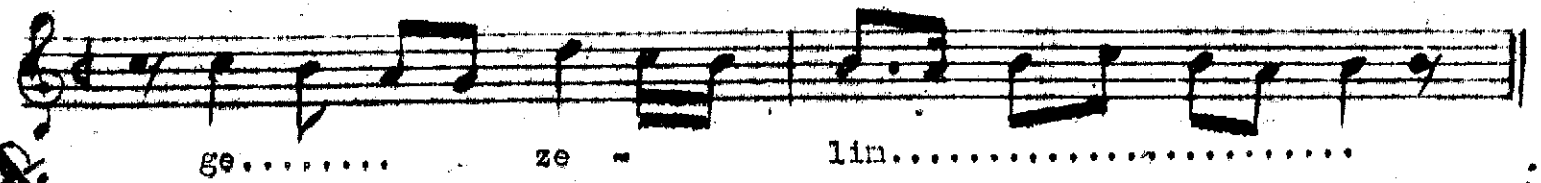
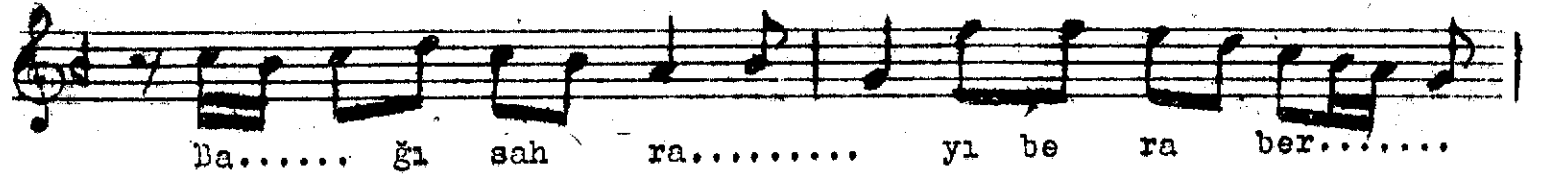
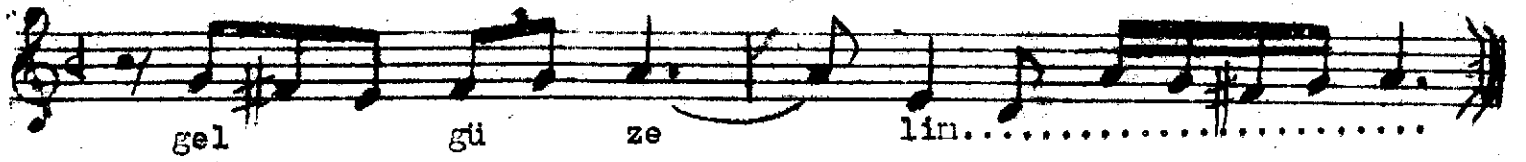


Aksak

UŞSAK ŞARKI

Dellâlzade

İsmail Efendi



yar..... yar.....

Gel gi de lin..... sah ra la

ra..... Ah.....

dağ la ra..... bağ la ra ye şil kên

ha..... lar dü şen..... niş

ah..... bağ la ra

(Aranağnesi)

Muntazirdır sana uşşak gel güzelin
 Bağ-ı sahrayı beraber gezelin
 Efendim gel gönlün açılsın
 Yanağında güller seçilsin
 Bezmimize safa saçılsın
 Yar yar aman gel gidelin
 Sahralara dağlara bağlara
 Yeşil kenhalar döşenmiş, dağlara bağlara.